

Question1**[5]**

Select the correct answers to the questions from the given options. (Do not copy the question. Write the correct answer only):

- I. The material in which Robert Hooke observed first cell was
 - a. A plant material
 - b. Animal material
 - c. Water
 - d. A bacterium
- II. An ant is an example of
 - a. A unicellular organism
 - b. An amoeboid organism
 - c. A slipper shaped organism
 - d. A multicellular organism
- III. Which of these cells help in temperature regulation?
 - a. Muscle
 - b. Skin
 - c. Nerve
 - d. Bone
- IV. Which of these pairs do not satisfy as a part of nucleus of a cell?
 - a. Nucleosome, chromosome
 - b. Chloroplast, chromosome
 - c. Genes and nucleoplasm
 - d. Nucleoplasm, nucleolus
- V. How many chromosome pairs are present in each cell of a human being?
 - a. 7
 - b. 14
 - c. 23
 - d. 46

Question2.**Name the following.****[1x 10=10]**

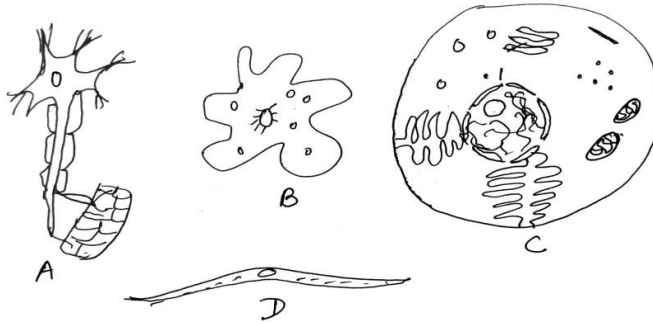
- (a) The largest cell in the world.
- (b) A pigment found in plastids.
- (c) An organelle which gives colour to fruits.
- (d) The term for solution found in vacuoles.
- (e) A device used to observe and study cells.
- (f) The smallest organism.

- (g) A biological process through which we grow in height.
- (h) Name of any one scientist who contributed towards cell theory.
- (i) Term for the 'non-living' components of cell.
- (j) A dense liquid found between cell membrane and nuclear membrane.

Question 3 .

Identify and redraw the cells given here in your answer sheet. Write three postulates of cell theory.

[5]



*****ALL THE BEST*****